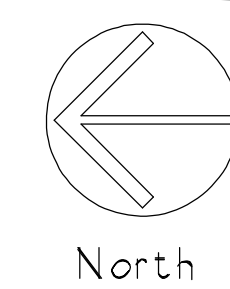
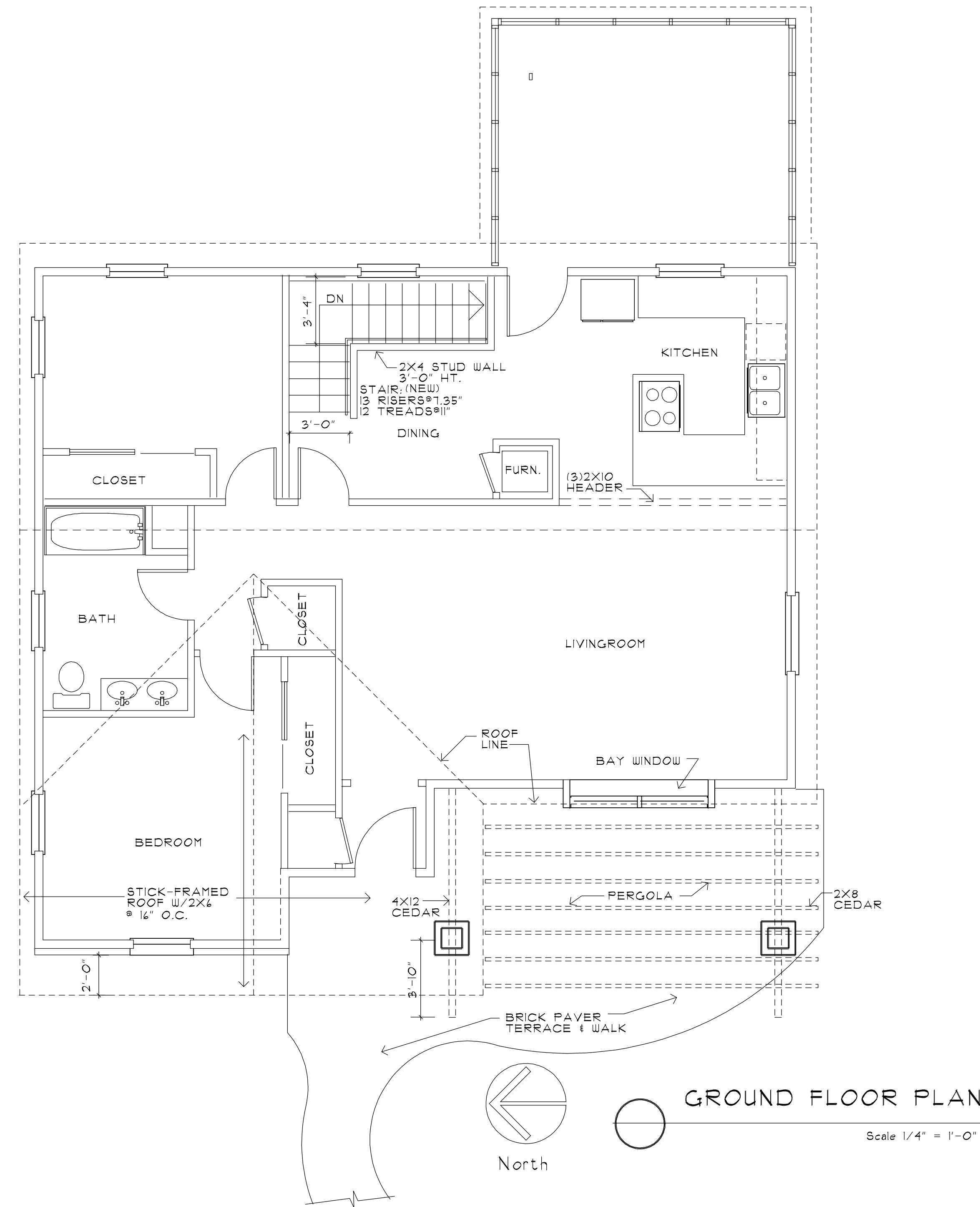


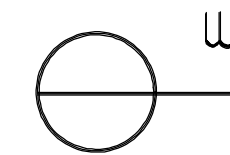
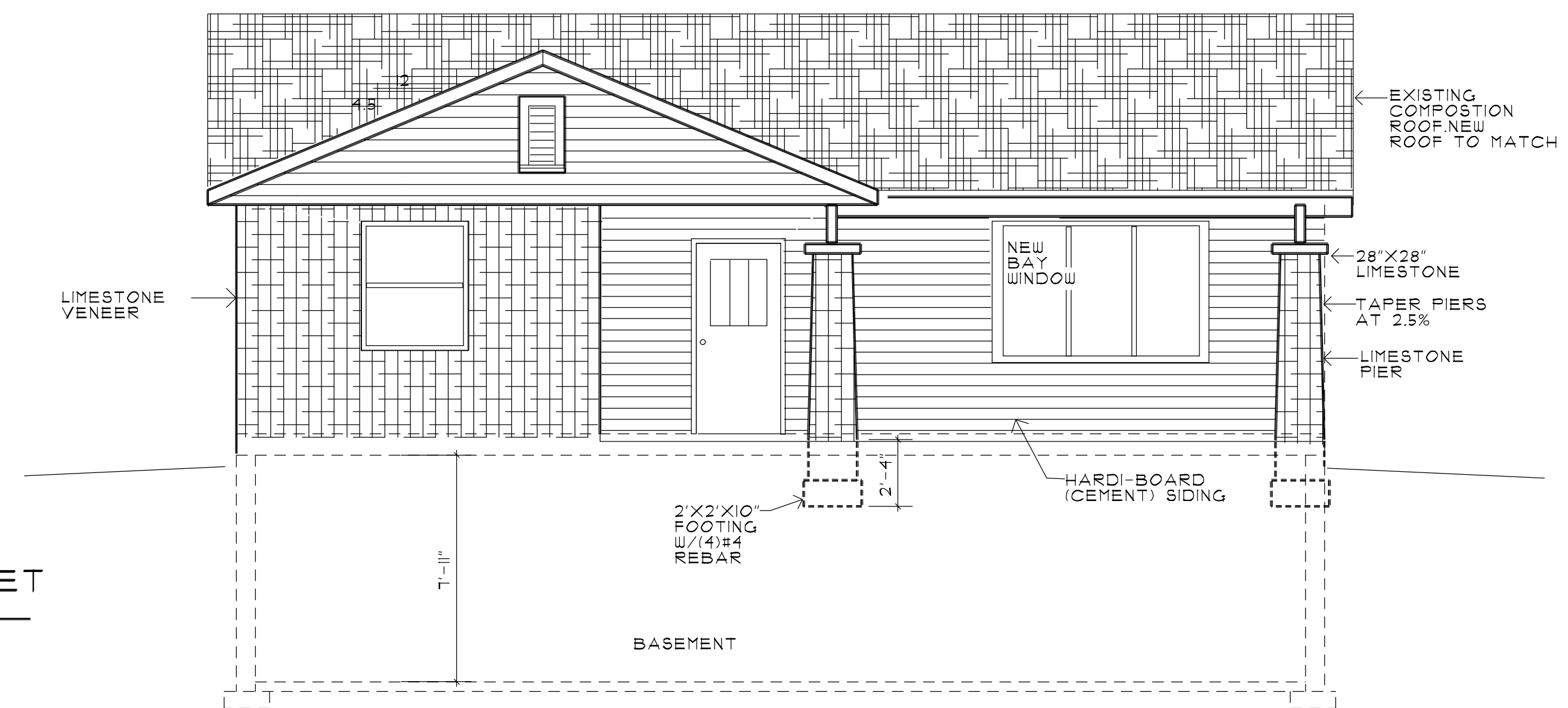
BASEMENT FLOOR PLAN

Scale 1/4" = 1'-0"



GROUND FLOOR PLAN

Scale 1/4" = 1'-0"



WEST ELEVATION-STREET

1/4" = 1'-0"

HERNDON DESIGN
 714 SOUTH FESS AVE.
 BLOOMINGTON, INDIANA 47401

REMOVAL HOUSE PROJECT
 109 SOUTH CLIFTON AVE.
 BLOOMINGTON, INDIANA

Project # 109
 Date 04-10-09
 Designed by PB
 Drawn by DK
 Checked by PB
 Revised

Sheet No.
 A1